

The Environment

IDBs try to improve the environment in their everyday activities. The environmental project they are perhaps most proud of is their work to increase the numbers of owls and kestrels in Lincolnshire.

Each year, new bird boxes are put up, and checked for chicks. Here are some photographs from the last couple of years...



Internal Drainage Boards



How does water get to the sea?

In Lincolnshire, much of the land is below sea level. This includes cities, towns and countryside.




Internal Drainage Boards (IDBs) work with other groups like Councils and the Environment Agency to make sure that Lincolnshire stays above water!

IDBs look after lots of areas within Lincolnshire-why not check to see if you live in an IDB district?

Check out the map of Lincolnshire IDBs:

 [Witham IDBs on Twitter @WDIDB](#)

 Or have look at www.ada.org.uk



A	Z	G	H	J
I	P	M	U	P
I	S	H	O	E
U	I	Y	T	N
R	B	K	T	V
D	A	J	E	I
L	R	I	R	R
F	N	F	N	O
G	O	V	Y	N
H	W	B	W	M
R	L	N	E	E
J	F	R	A	N
K	F	I	D	T
E	R	W	S	J
E	L	R	C	H

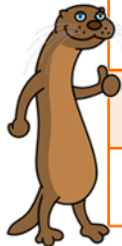


1. Barn owl
2. Crayfish
3. Drain
4. Eel
5. Environment
6. Excavator
7. Fish
8. Flail
9. Flood
10. IDB
11. Maintain
12. Otter
13. Pumping station
14. River
15. Rural
16. Toad
17. Tractor
18. Urban
19. Watervole
20. Weed





T	D	X	Q	T	O	T	T	E	R
R	N	O	I	T	A	T	S	G	N
A	K	H	V	G	C	R	A	Y	F
C	O	J	B	J	G	N	U	P	D
T	D	I	D	B	R	A	R	R	W
O	G	A	F	F	I	B	U	P	A
R	T	E	H	R	V	R	R	M	T
D	Y	E	J	E	E	U	A	A	E
W	S	L	U	G	R	I	L	I	R
L	V	K	W	C	W	H	L	N	V
I	E	E	X	C	A	V	A	T	O
A	H	C	D	D	W	U	J	A	L
L	L	V	H	C	J	E	H	I	E
F	L	O	O	D	H	F	E	N	E
H	F	B	D	A	O	T	C	D	S

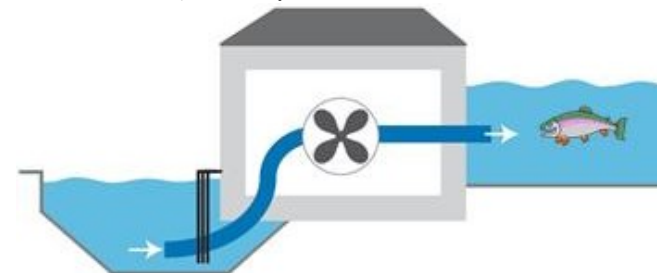


To get the water out to sea to stop us from flooding, IDBs collect the water in drains.

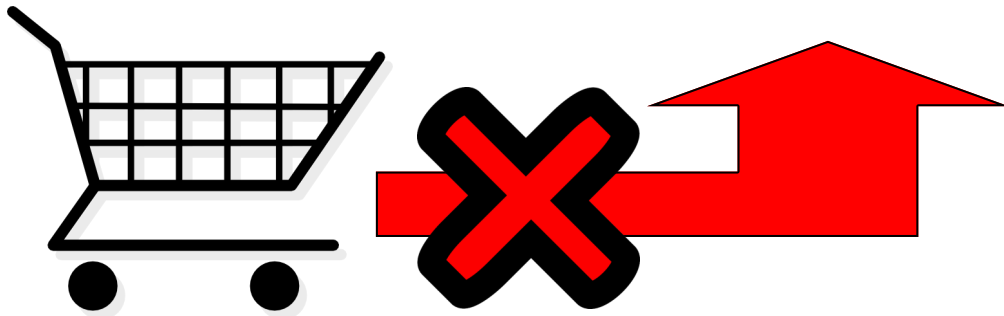
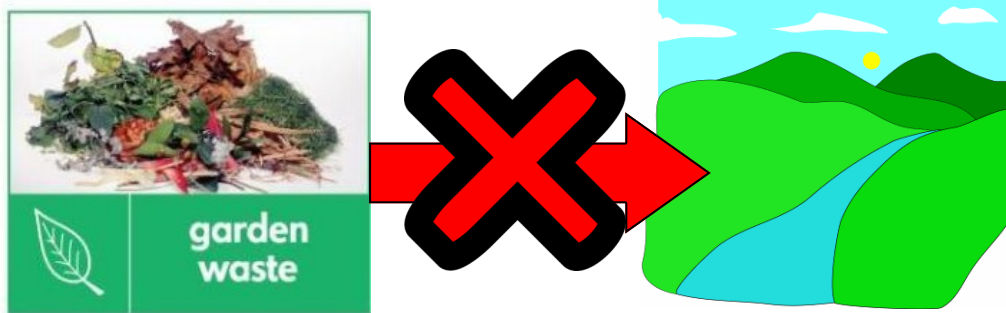
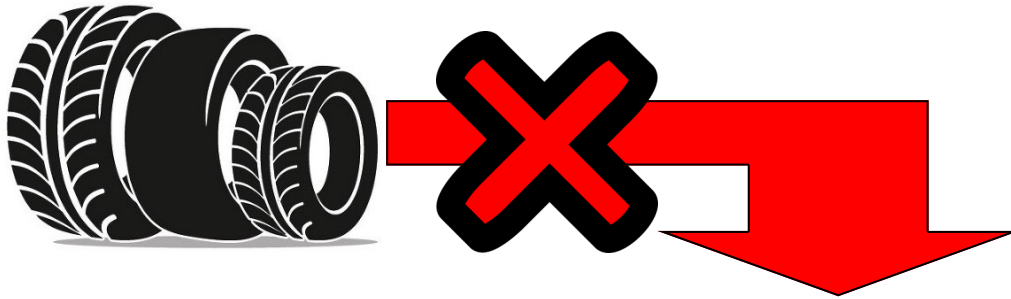


The drains then direct the water towards pumping stations.

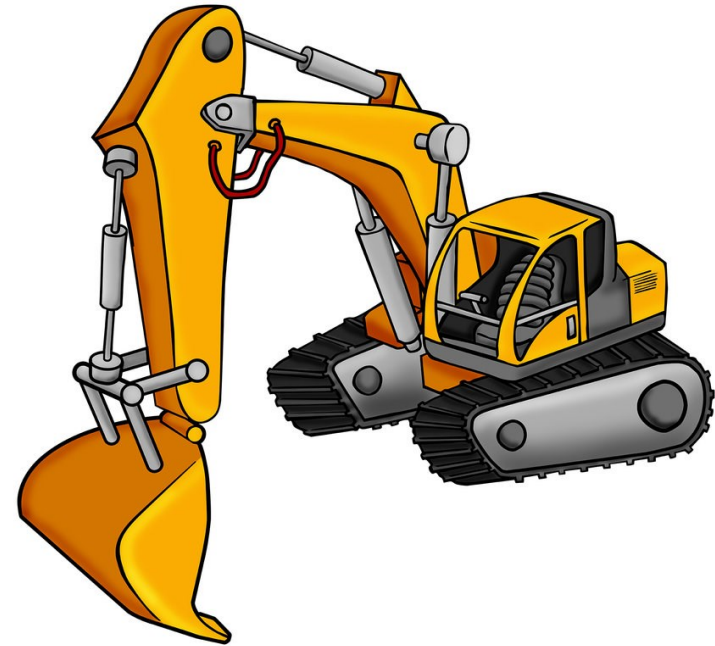
Pumping stations take the water from the low level drains and pump it up to higher level drains. The last pumping station in the chain will pump the water out to large rivers or the sea.



What doesn't belong in drains



Normally once a year, IDBs use tractors and diggers to remove weed from the bottom of the drains. This allows the water to flow as quickly as possible along the drain.



IDBs also use diggers to remove mud and silt from the bottom of the drain. This is to make sure that there is enough space in the drain for the water.

What do IDBs do to stop flooding from occurring?

IDBs need to make sure that they can drive alongside the drains to do important maintenance work. They need up to 9 meters to get the machines through.



Sometimes we need to cut down the branches of trees and hedges which might be in the way. We make sure that this is done at the right time of year so that we don't disturb nesting birds.



When rubbish is dropped into drains, it can cause pipes and bridges to become blocked. This means that water can no longer flow through them and flooding can occur. Rubbish in rivers can also pollute the water which can cause the animals in the drains to die.

Never throw anything into a drain or river!

Who lives in IDB drains?

